



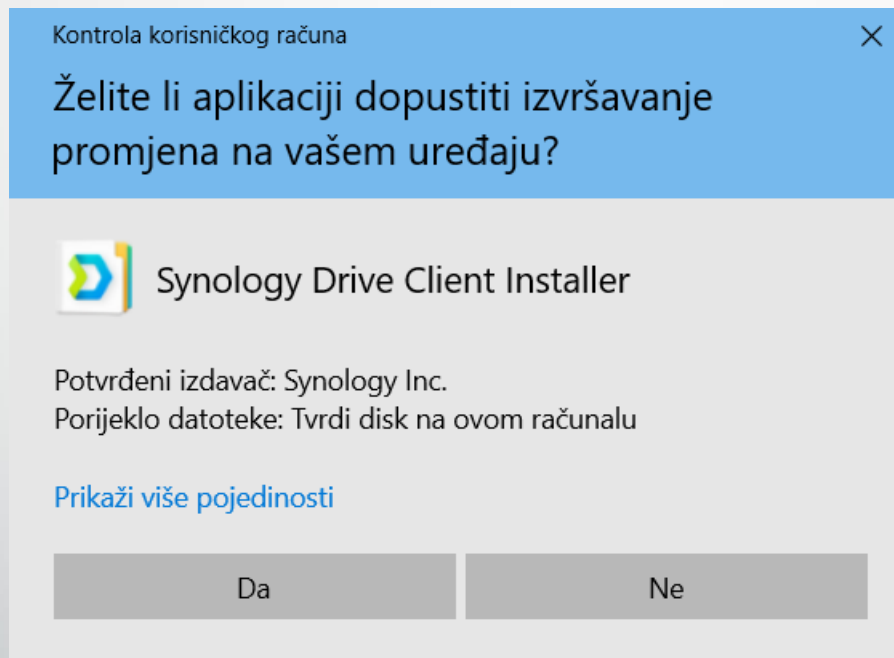
# Synology drive - vaš privatni oblak

Instalacija na računalo i podešavanje dijeljene mape sa servera – sinkronizacija podataka korak po korak...

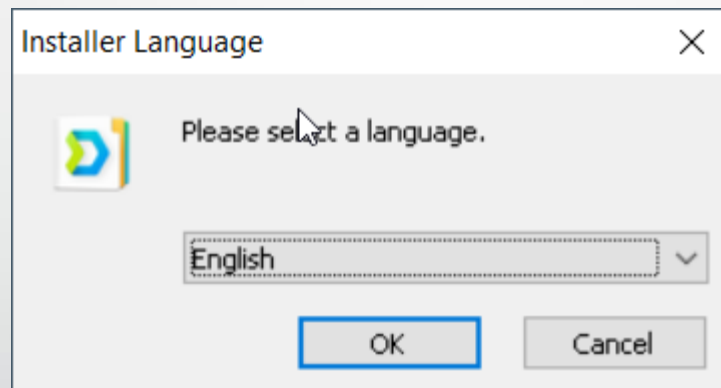
# Preuzimanje programa

- Program preuzmite sa [ove poveznice](#)
  - Ili otvorite adresu Synology.com – Support – Download Centar – Product – Nas – Model 218+
  - A nakon toga birajte Desktop Utilities – Synology Drive – Windows exe i pokrenite

# Pokrenite program, potvrdite sa Da



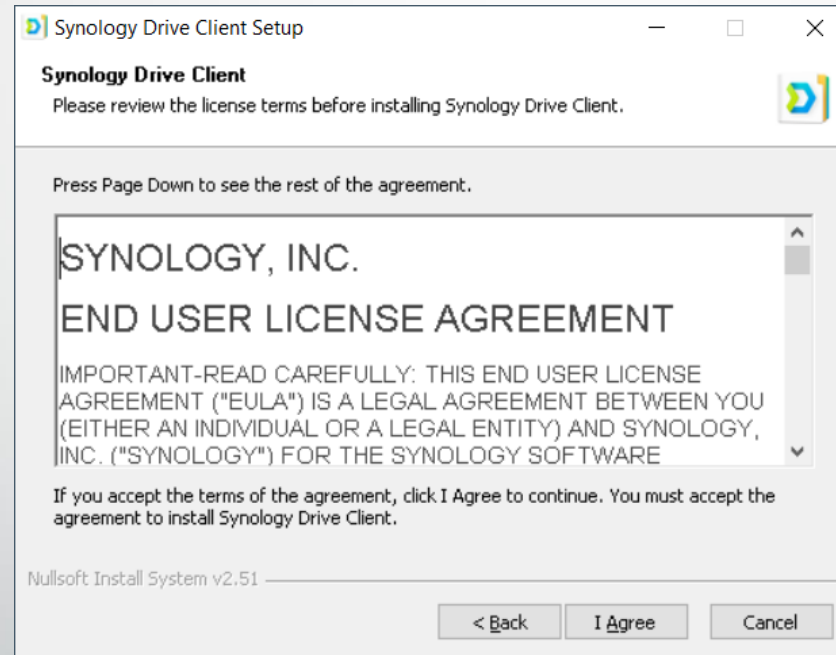
# Potvrdite jezik



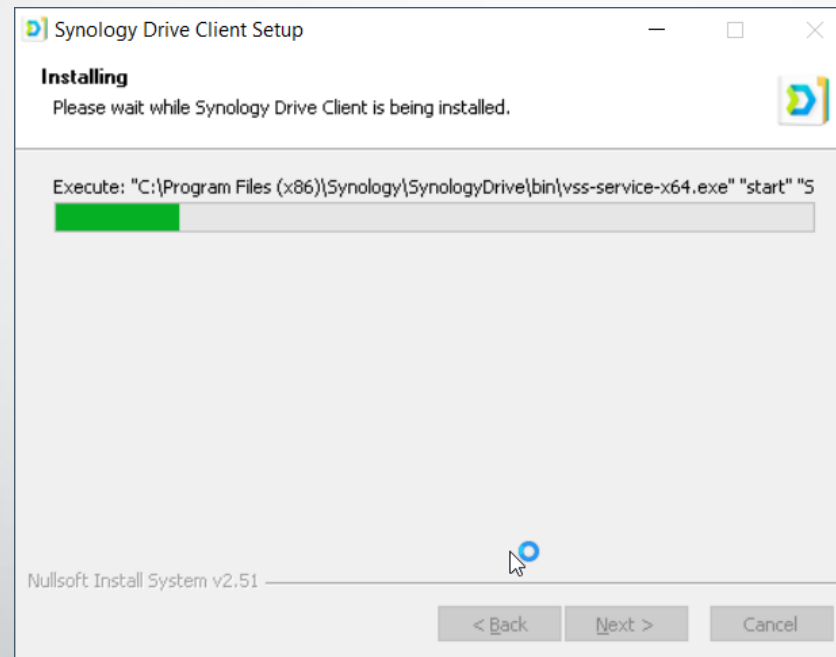
# Stisnite Next (dalje)



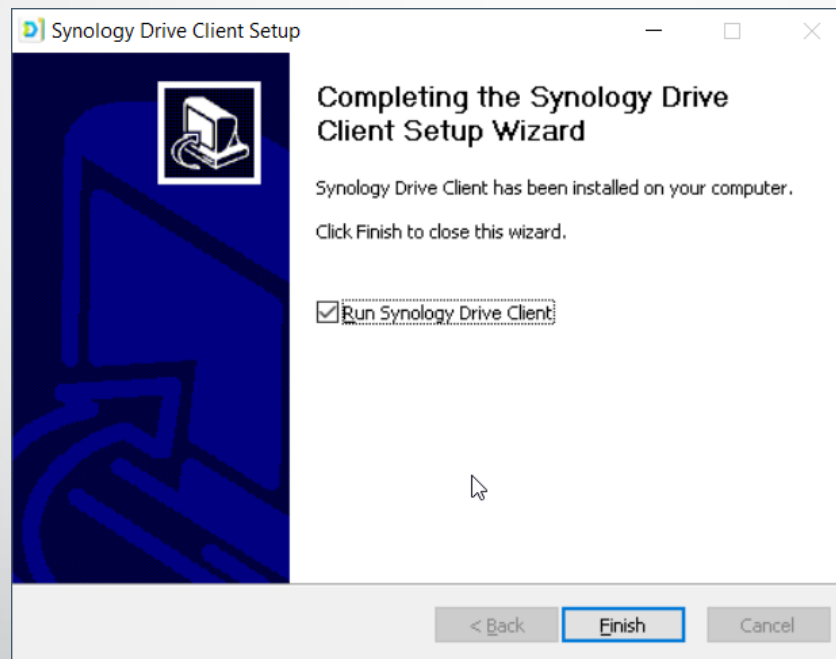
# Potvrdite da se slažete sa licencom (I Agree)



# Pričekajte dok se program ne usnima

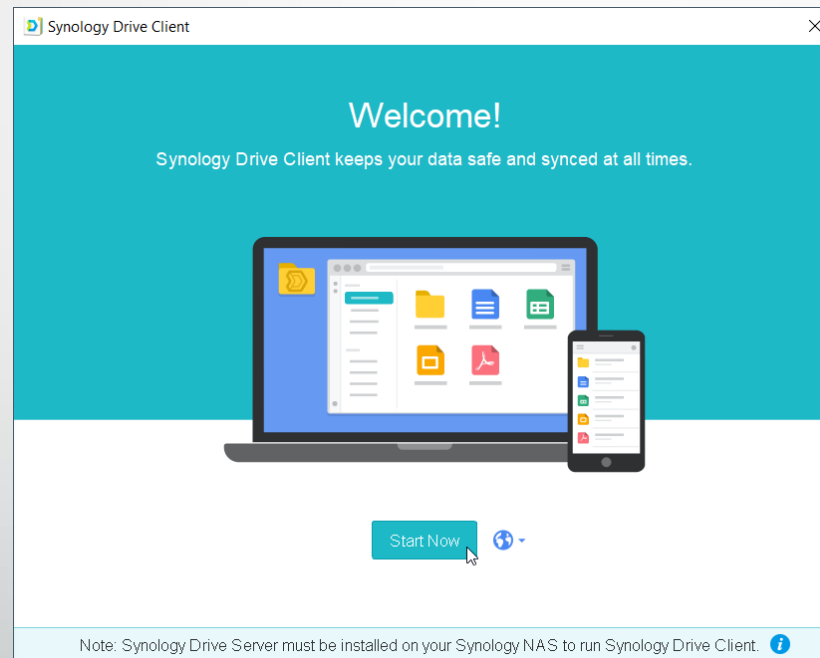


Potvrdite sa Finish . Program je sada usnimljen i pokrenuti će se.

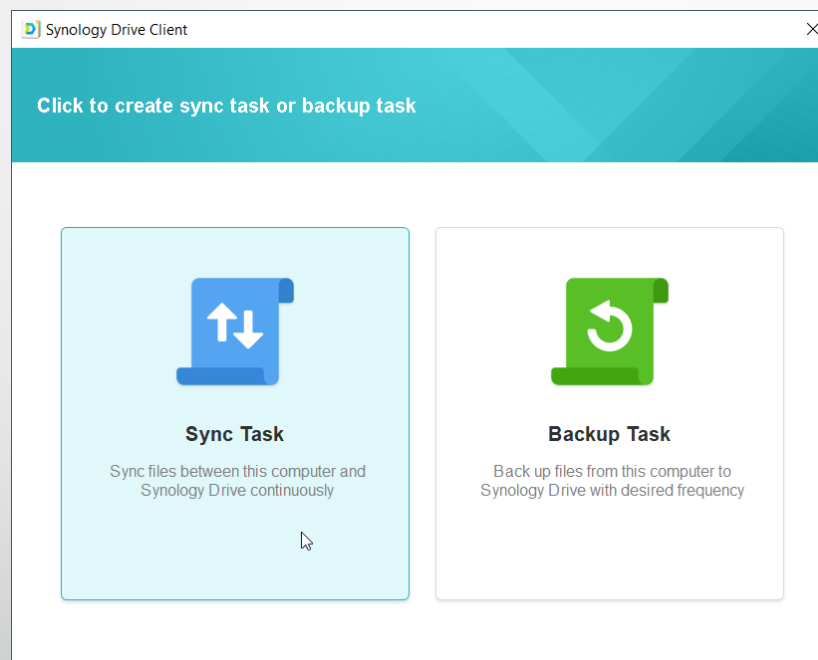




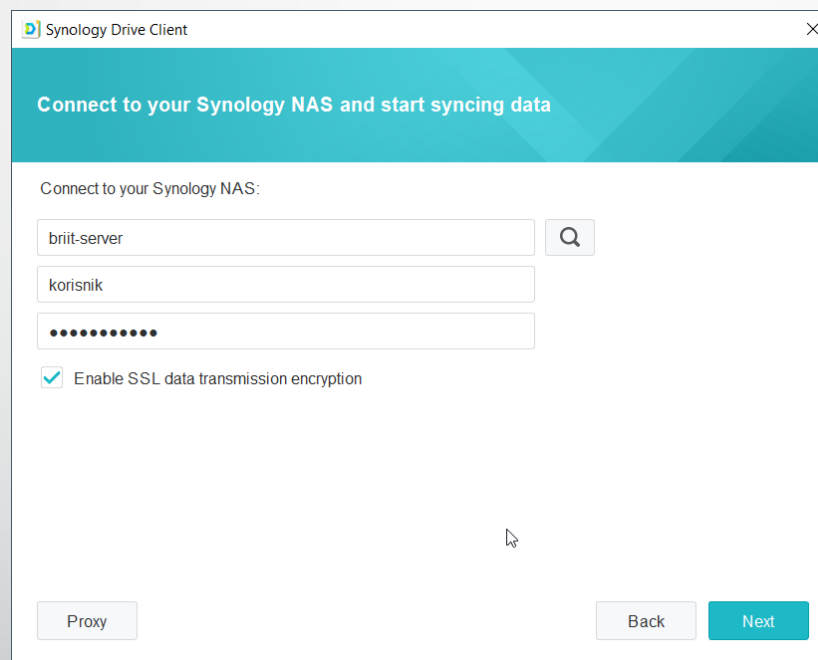
# Kliknite na Start Now – za početak postavljanja



# Za sinkronizaciju (usklađivanje) odaberite Sync Task

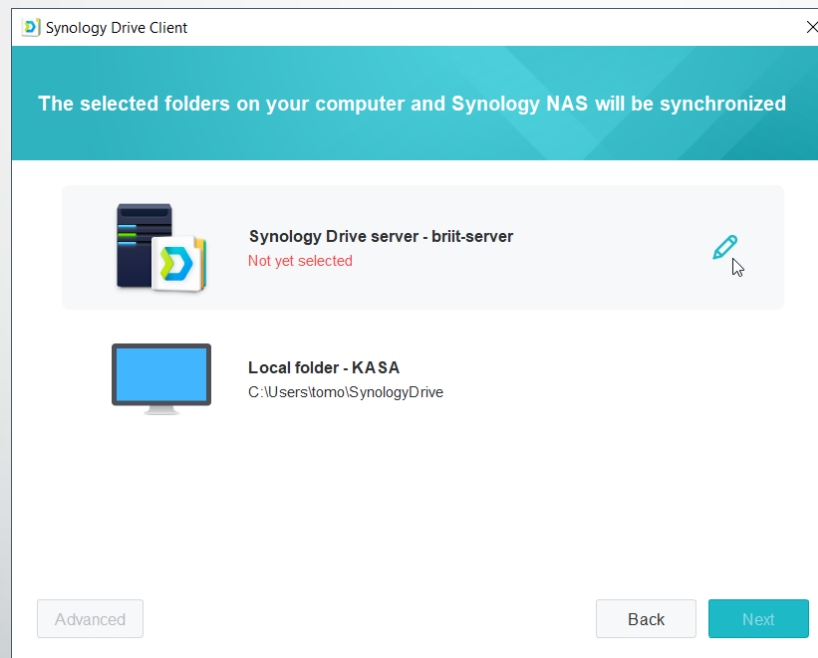


Popunite naziv servera, vaše korisničko ime i lozinku, a ako koristite izvan vaše firme, ostavite kvačicu na Enable SSL (dodatna sigurnost)

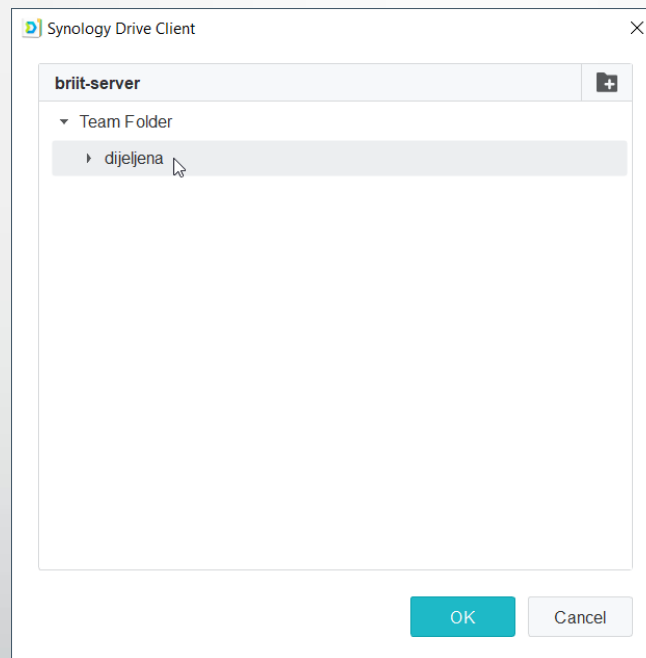


The screenshot shows the 'Synology Drive Client' window. At the top, a teal header contains the text 'Connect to your Synology NAS and start syncing data'. Below this, the main area is titled 'Connect to your Synology NAS:'. It features three input fields: the first contains 'britt-server' and has a search icon to its right; the second contains 'korisnik'; the third is a password field with ten dots. Below the password field is a checked checkbox labeled 'Enable SSL data transmission encryption'. At the bottom, there are three buttons: 'Proxy' on the left, 'Back' in the middle, and 'Next' on the right.

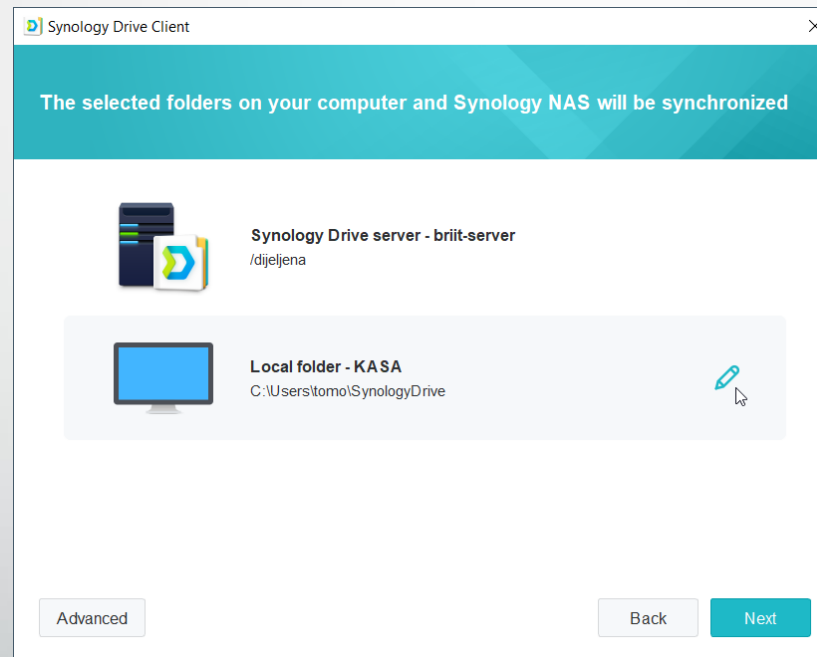
# Kliknite na olovku



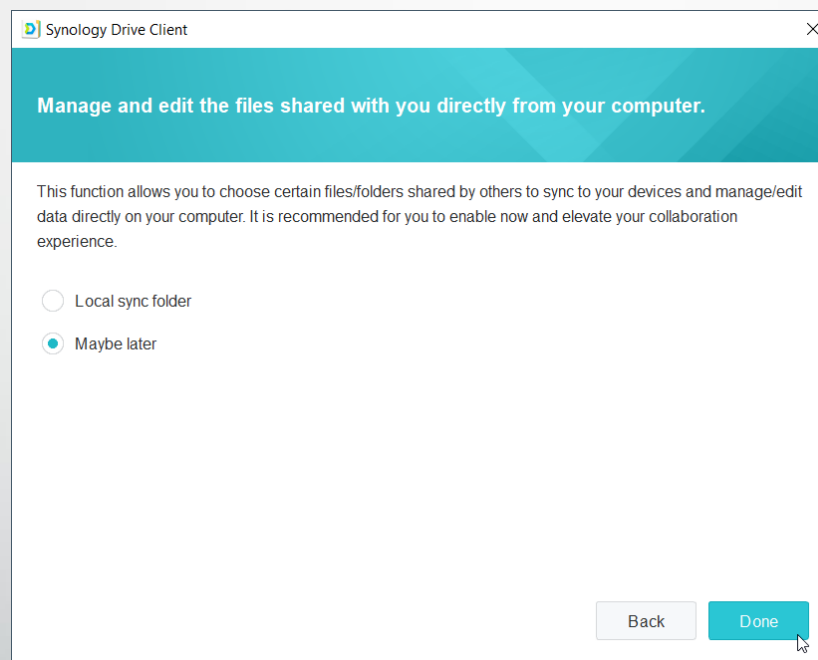
Kliknite na Team folder, odaberite mapu za sinkronizaciju (uskladenje) i stisnite OK



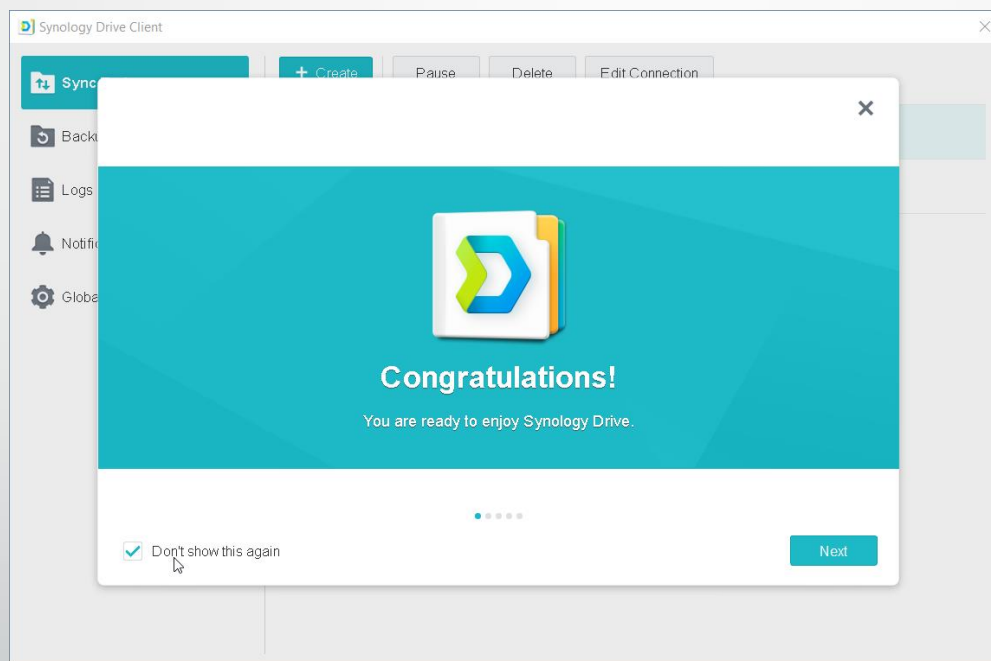
Ukoliko želite možete odabrati drugu mapu za spremište na lokalnom računalu, ako ne, samo stisnite Next (Dalje)



# Odaberite Maybe later (Možda kasnije) i Done (Gotovo)

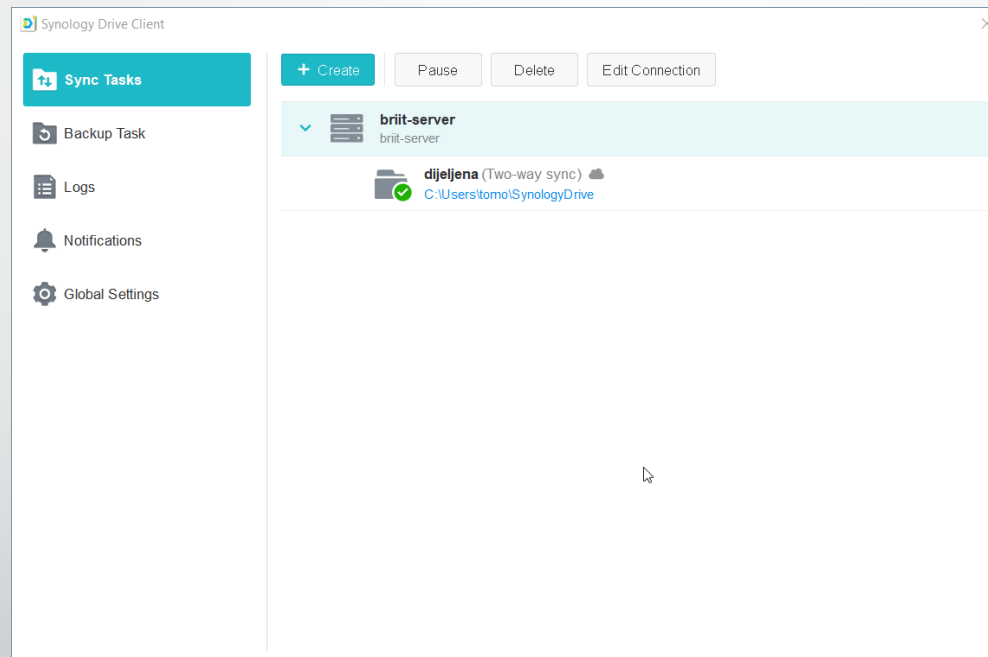


Slijede kratke upute, možete pregledati sa Next i kada završite stisnite Do not show this again (Ne pokazuj više). Zatvorite prozor sa X

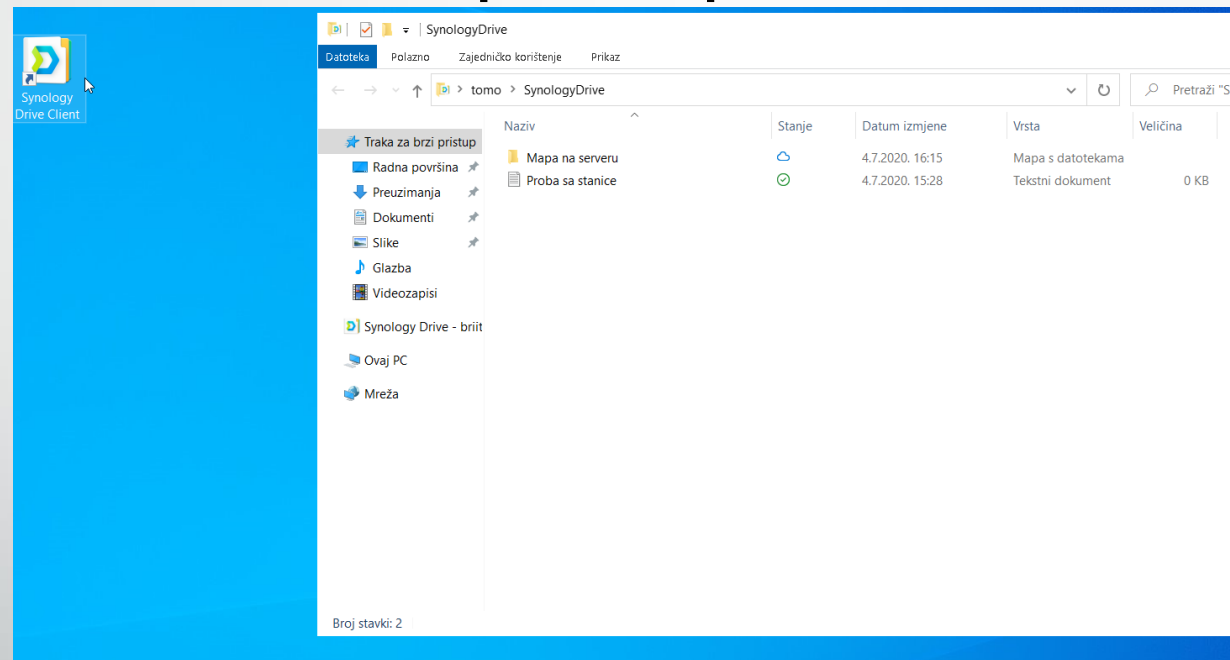





Prozor sa postavkama možete sada zatvoriti. Ako ga želite kasnije naknadno otvarati, nalazi se na alatnoj traci, na ikonama dolje desno kod sata.



Automatski kreće usklađenje sa serverom, a pregled datoteka možete uvijek otvoriti ili preko ikonice sa radne površine Synology drive ili preko trake za brzi pristup.





Hvala na pažnji!